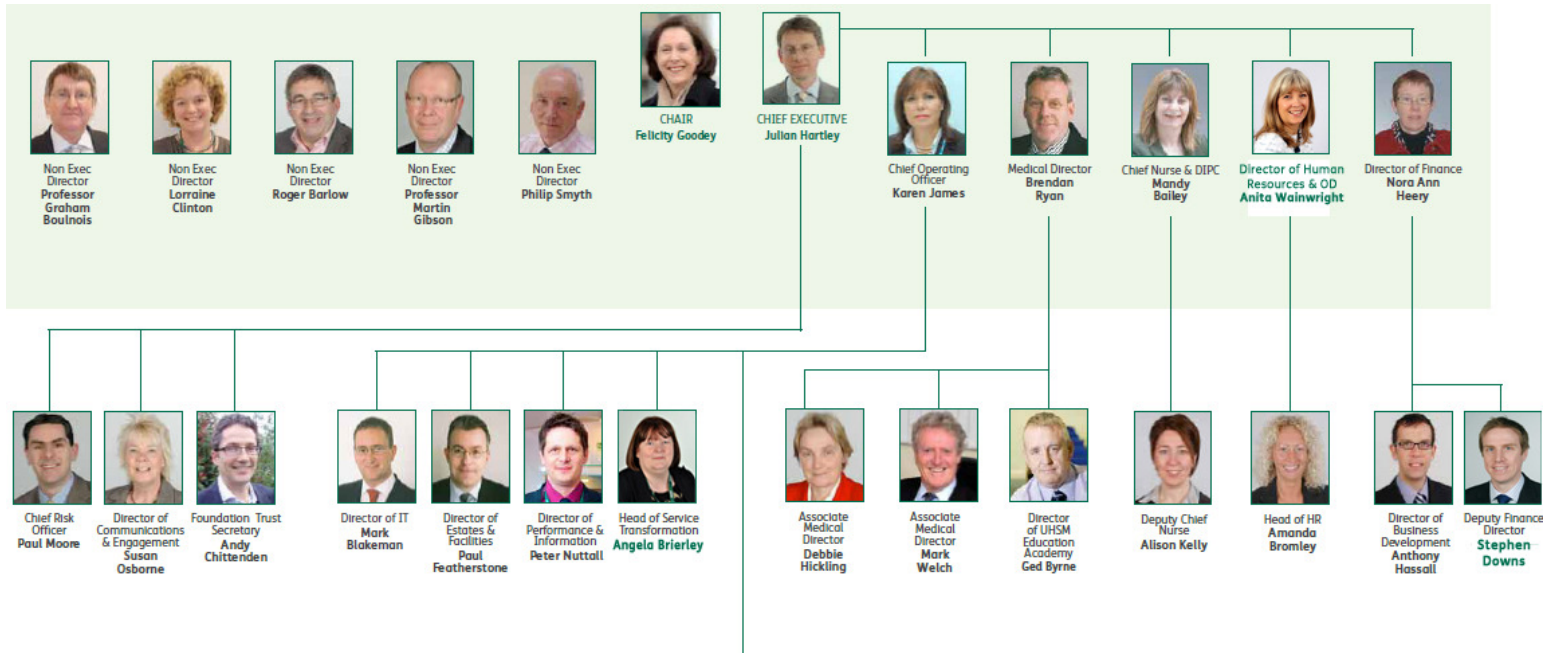


> Organisational chart



	Scheduled Care Associate Director of Operations Trish Cavanagh Head of Nursing Caron Crumbleholme	Unscheduled Care Associate Director of Operations Jo Robson Head of Nursing Lindsay Stewart	Community Services Interim Associate Director Joanne Royle
<p>Clinical Support Services Clinical Director Dr Sue Beards Associate Clinical Director Dr Andrew Bentley Associate Director Jayne Wood Head of Nursing Janet Brennan Operations Manager (8C) Vacant</p> <p>Directorate Managers Radiology Stephanie Carney Pathology Krystyna Kornecki Theatres Michelle Hargreaves Anaesthetics/Critical Care Pain Daniel Moore Therapies (Head of) Linda Buckley Matron (AICU & OPD) Stuart Jones Matron (CTCCU) Julie Hughes Matron (Theatres) Christine Miles</p> <p>Reporting to the Chief Nurse Matron (Patient Experience) Sarah Newlove</p>	<p>Cardiothoracic Clinical Director Dr Neil Davidson Matron Nancy Hurst Matron (0.5 wte) Francine Wilson Directorate Manager Judy Coombes</p> <p>Women's & Children's Clinical Director Mrs Anjali Ahluwalia Head of Midwifery / Nursing Helen Thompson Matron Carol Murphy Matron Sue Blantern Directorate Manager Brenda Sutcliffe</p> <p>Surgery Clinical Director Mr Simon Galloway Matron Nicky Frame Matron (0.5 wte) Karen Parker Directorate Manager Jonathan O'Brien</p> <p>Head and Neck / Burns & Plastics Clinical Director (Interim) Mr Simon Galloway Matron Rachel Robertson Directorate Manager Karen Zaman</p>	<p>Urgent Care Clinical Director Mr Darren Walter Matron Kate Daly Directorate Manager Mike Young</p> <p>Medical Specialties Clinical Director Dr John Crampton Matron Janette Davies Matron Helen Hodgson Directorate Manager Vacant</p> <p>Respiratory Clinical Director Dr Phil Barber Matron Graham Gledhill Directorate Manager Julia Hamer</p> <p>Complex Health & Social Care Clinical Director Dr Martin Vernon Matron Michelle Connaughton Directorate Manager Joanna Williams</p>	<p>Scheduled Care General Manager Jan Turner</p> <p>Unscheduled Care General Manager Lesley Coates</p>

> If this chart needs to be altered, please contact Communications on x2886 with the relevant information.